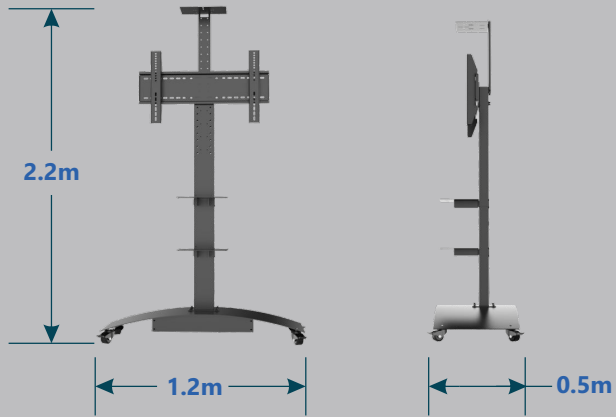




DESCRIPTION

nT07DD2D **Curve trolley** is a multipurpose AV cart with elegant curved base for higher stability and strength. Suitable for 42" -65" Display panel - with max vesa 600 x 400 mm. With 2 shelves, cable management, power strip, camera mount and storage space enclosure at the base - the cart gives full flexibility for multiple and ease of application. Heavy duty caster wheels enables smooth and easy movement . Suitable for Conference rooms , Huddel rooms, Training rooms , Educational , Hospital , Reception and digital signage applications .

nT07DD2D **Curve trolley** is made up of powder coated ms steel material - it has a heavy curved base with a storage space - curved base provides higher stability .Two adjustable shelf (mm x mm) allows more device management. Height of the display mount can be adjusted by 300 mm - display from 42" to 65" up to 45 kgs with maximum vesa up to 600x 400 mm can be fixed to the mount . Camera mount shelf provided above the display and heavy duty caster wheels 2"(m10) at the base for easy movement .

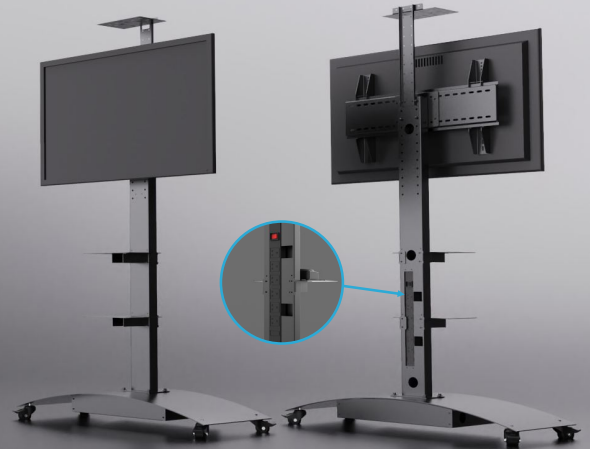


Specification

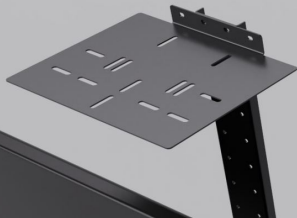
Material	:	Power coated ms steel
Material thickness	:	2.5mm
Weight	:	45 kgs
Height	:	2034 mm
Vesa	:	200x200mm, 200x400mm ,600x400mm
Sheif	:	2(300mm x 250mm)
Cable management	:	yes
PDU	:	Universal 6 amps-sockets Caster wheels "2"(m10)
Base size	:	1200mmx498mm
Base storage	:	(108mmx600mmx498mm)

Floor Mount Trolley

With Storage space, PDU, Cable management



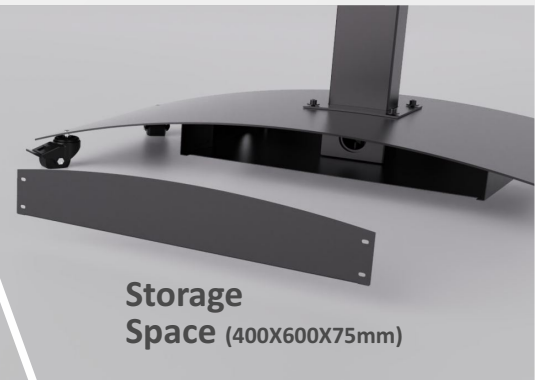
Camera Mount



Storage Shelves



Storage Space (400X600X75mm)



Webpage

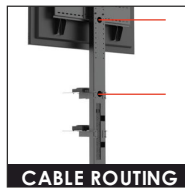
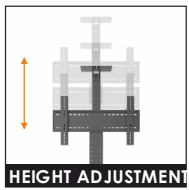
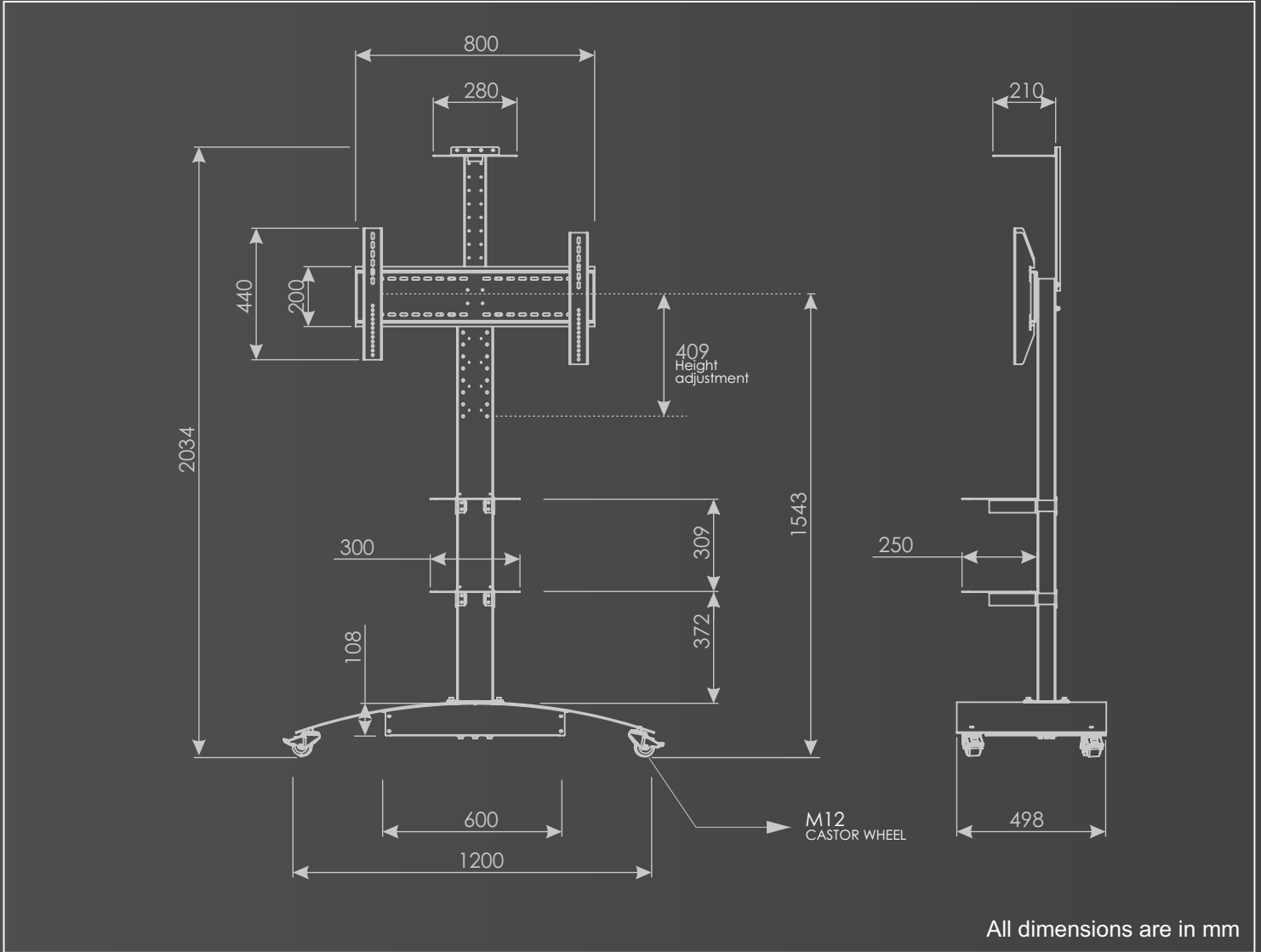


Youtube



CURVE TROLLEY WITH STORAGE / PDU

nT7DD02D



www.ntindia.net