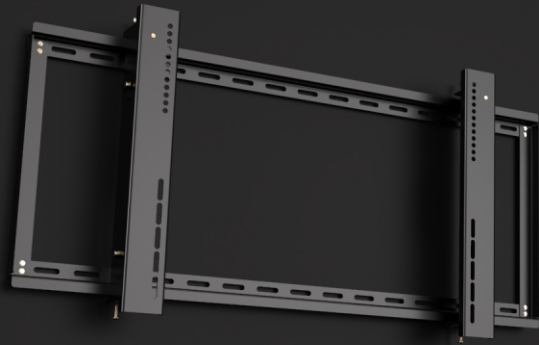




DESCRIPTION

nT07DA05 is a Heavy Duty fixed wall mount series for flat and curved display panels -with up and down 12 degree tilting function available in 4 ranges - nT07DA05A suitable for displays from 42" to 75"-max vesa 800x400 -weight capacity -50 Kgs . nT07DA05B suitable for displays from 55" to 86"-vesa 1000x600 -weight capacity -75 Kgs . nT07DA05C suitable for displays from 65" to 120"-vesa 1200x600 -weight capacity -120 Kgs . The mount is provided with tilting and height adjustment options . suitable for office , home , reception , digital signage , educationa and hospital applications .



Specification

Material	:	Power coated ms steel
Display size	:	A-42-75"/B-55-86"/C-65-120"
Weight	:	A-50 Kgs/B-75 Kgs./C-120 Kgs
Vesa	:	A-200X200,200X400,300X300,400X400, 600X400/B-200X200,300X300,200X400, 400X400,600X400,800X400,800X600mm, 1000X400mm,1000X600mm,1200X600mm
Angle adjustments	:	12 deg up/12 deg down
Depth	:	A/B-mm,C/D-mm
Color	:	Black
Angle adjustment	:	8°



HEAVY DUTY ULTRA MOUNT

nT7DA05

