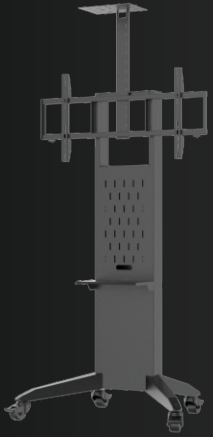




DESCRIPTION

nT07DD02C Point series display cart is suitable for 37"-86" displays up to 75 Kgs. , compatible vesa up to 600 x 400 mm . It is a multipurpose AV cart with 1 shelf for of A V equipments . With cable management, power strip, camera mount and enclosed storage space at the back side - the cart gives full flexibility for multiple applications and ease of use . 3" - m12 Heavy duty caster wheels enables smooth and easy movement. Supports Potrait & landscape . Available in Black and White colour . Suitable for Conference rooms , Huddle rooms , Training rooms , Educational , Hospital , Reception and digital signage applications .



Specification

Display Size	:	37-86"	Telescopic	:	No
Material	:	Powder Coated MS Steel	Castor wheel	:	3" M12
Material Thickness	:	2mm	Base Size	:	932 x 732 x 210mm
Weight Capacity	:	60 Kgs	Color	:	Black / White
Height	:	1618mm	PDU	:	Yes
Display Adjustment	:	322mm	Storage	:	Yes 2 (527 X 312 x 100mm)
VESA	:	200X200 , 300x300 400x400 , 600x400	Orientation	:	Landscape
Shelf	:	1 (325 x 208mm)			
Camera Shelf	:	1 (220 x 280mm)			
Cable Management	:	Yes			

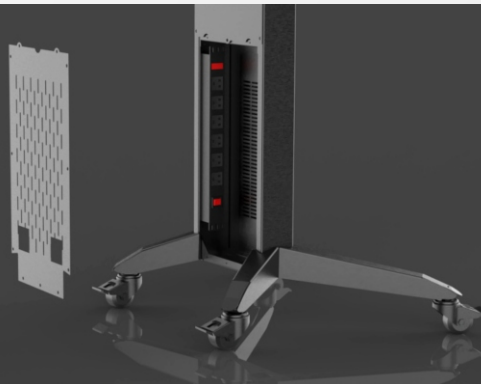
Shelf

325 X 208mm



Storage X 2

527 x 312 x 100mm



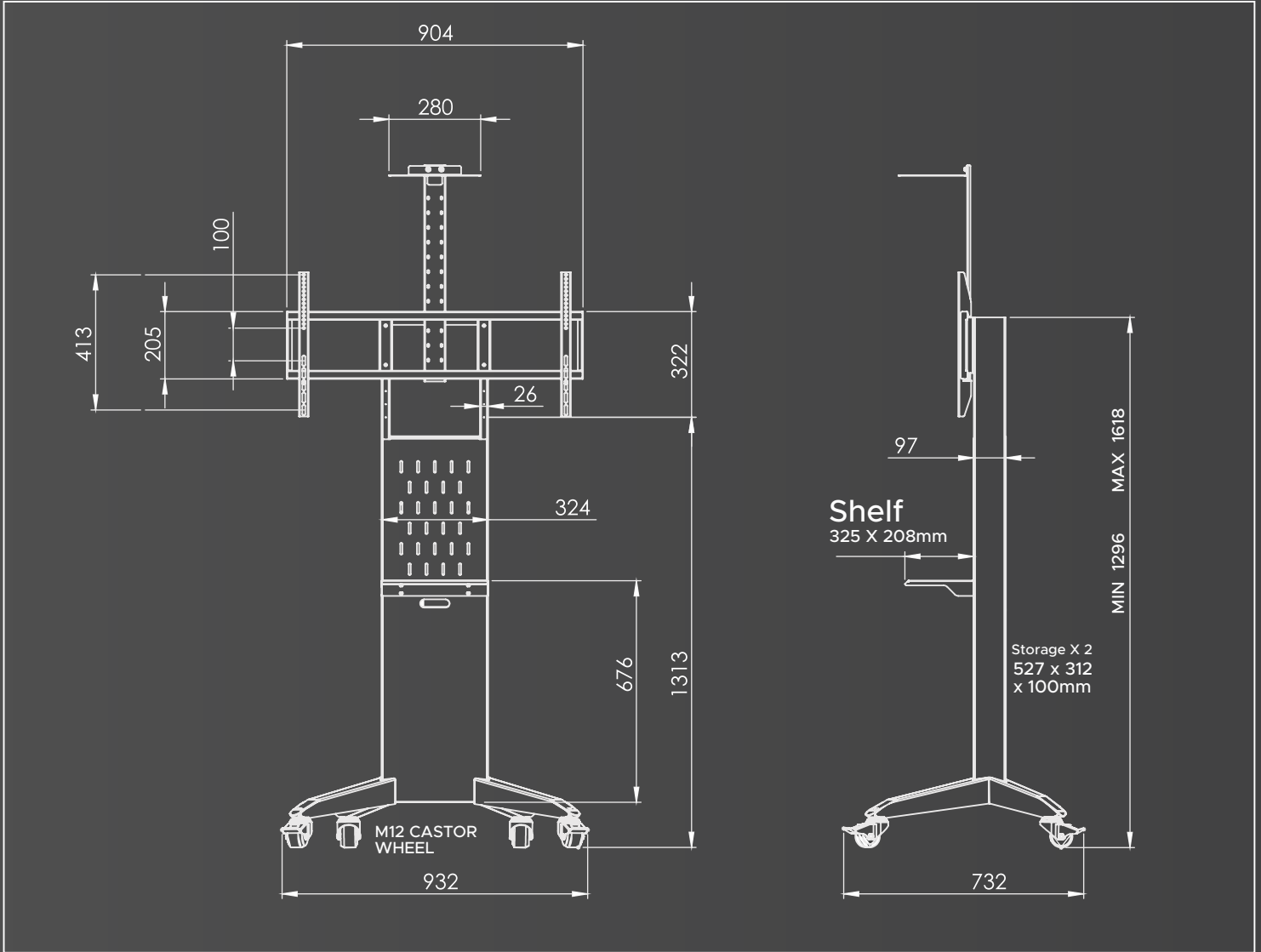
PDU

Webpage



Youtube

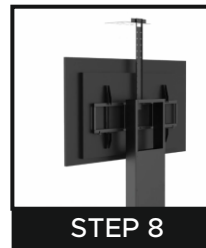
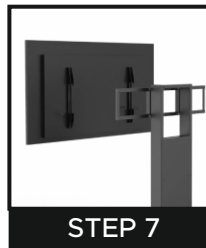
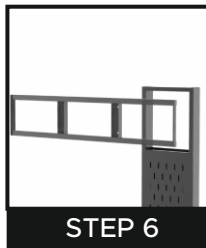




All dimensions are in mm



ASSEMBLY DRAWING



- STEP 1 :** Assemble the wheels with the base arms
- STEP 2 :** Fix the device plate in main frame
- STEP 3 :** Screw the covers of storage with the main frame
- STEP 4 :** Assemble the main frame with the base
- STEP 5 :** Mount the shelf with provided screws
- STEP 6 :** Assemble the bracket to main frame
- STEP 7 :** Attach arms to the TV and assemble it on the bracket
- STEP 8 :** Assemble the camera mount with provided screws

PACKING LIST

ITEM NO:	PART IMAGE	PART NUMBER	DESCRIPTION	QTY.	CHECK LIST
1		NT7DD02C-L1	LEFT LEG	1	
2		NT7DD02C-R2	RIGHT LEG	1	
3		NT7DD02C-3	BASE TRAY	1	
4		NT7DD02C-4	TOP TRAY HOLDER	1	
5		NT7DD02C-5	BRACKET	1	
6		NT7DD02C-6	TRAY	1	
7		NT7DD02C-7	TRAY HOLDER CLAMP	2	
8		NT7DD02C-8	CABLE MANAGER	1	
9		NT7DD02C-9	BACK COVER TOP	1	
10		NT7DD02C-10	DEVICE HOLDER	1	
11		NT7DD02C-11	BACK COVER BOTTOM	1	
12		NT7DD02C-12	CAMERA CLAMP HOLDER	1	
13		NT7DD02C-13	CAMERA CLAMP	1	
14		NT7DD02C-14	CASTER WHEEL WITHOUT LOCK	2	
15		NT7DD02C-15	CASTER WHEEL WITH LOCK	2	
16		NT7DD02C-16	ARM	2	
17		NT7DD02C-17	POWER STRIP OPTIONAL	2	

18		M5 NYLOCK NUT	M5 NYLOCK NUT	2	
19		AB M5X8	ALLEN BOLT M5X8 mm	24	
20		M8 WASHER 2 mm	M8 WASHER 2 mm THICKNESS	8	
21		AB M8X15	ALLEN BOLT M8x15 mm	4	
22		CSK SCREW M3X6	CSK SCREW TYPE M3X6mm	6	
23		AB M8X25	ALLEN BOLT M8X25 mm	4	
24		AB M5X12	ALLEN BOLT M5X12mm	2	
25		M5 WASHER 1.5 mm THICK	M5 WASHER 1.5 mm THICKNESS	12	
26		STAR M5X25	STAR HEAD SCREW	2	
27		M12 NORMAL NUT	M12 NORMAL NUT	4	
28		STAR WASHER HEAD SCREW M5X8	STAR WASHER HEAD SCREW M5X8	22	
TV SCREW SET					
A		SPH M8X50	STAR PAN HEAD SCREW M8X50 mm	4	
B		SPH M8X25	STAR PAN HEAD SCREW M8X25 mm	4	
C		SPH M6X25	STAR PAN HEAD SCREW M6X25 mm	4	
D		M8 WASHER 2mm, OD-22	M8 WASHER 2 mm THICKNESS OD 22 mm	4	
E		M6 WASHER THICK 2mm, OD16	M6 WASHER 2 mm THICKNESS OD 16 mm	4	
F		6 mm ALLEN KEY	FOR M8 ALLEN BOLTS	1	
G		4 mm ALLEN KEY	FOR M5 ALLEN BOLTS	1	