

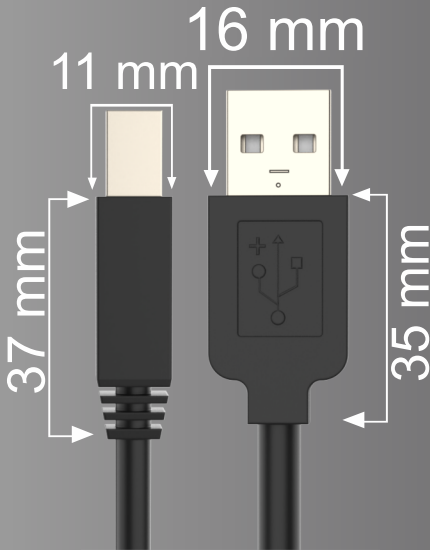
## **DESCRIPTION**

### **1BH14 USB 3.0 AM TO USB BM CABLE**

Usb 3.0 AM to Usb BM Cables are made up of fully shielded connectors and cables . Usb cable is made up of 2 Shielded twisted pair + 1 twisted pair for data and 2 c for power delivery and al foil +drain wire + Shield + pvc jacket. The conductor is tinned coated copper and the gauge of the conductor is 28 / 24 / 20 AWG . The USB 3.0 cable support full duplex Speed - and supports 5 Gbps speed . The connectors have full shell inside the mould to avoid rf and emi losses and also to avoid physical damages due to twists and plugging and unplugging .The cable is used for various applications like printer , human interface devices , scanners ,camera .... Available in lengths from 1.5 to 5 Mtrs.

# USB 3.0 AM TO USB BM CABLE

nT 01BH14

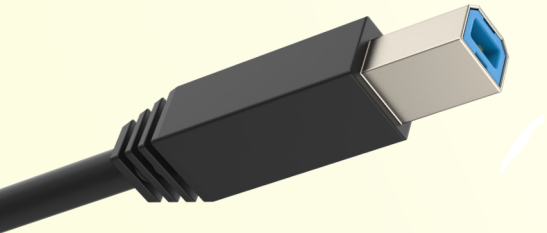
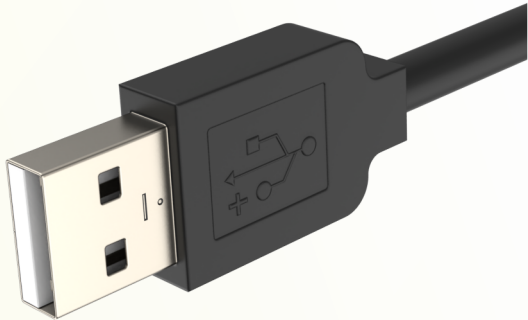


## Specification

Connector A	:	USB 3.0 AM Full Shielded
Housing	:	Metal Shell + ABS + PVC Overmoulding
Coating	:	Nickel /Gold
Connector B	:	USB 3.0 BM Full Shielded
Housing	:	Metal Shell + ABS + PVC Overmoulding
Coating	:	Nickel /Gold
Connection Type	:	Machine Soldering, Shield Crimping
Cable	:	2 Shielded twisted pair +1 twisted pair + 2 c + al foil + drain wire + shield + pvc
Gauge	:	28 /24 / 20 Awg
Conductor	:	Tin coated copper
Speed	:	5 Gbps
Protection	:	EMI & RF Protection
Colour	:	Black
Length Available	:	1.5 - 5 Mtrs

Cable conductor Tin Coated Copper

Supports full duplex Speed 5 Gbps Speed



Connector is Nickel coated and pins are gold coated

Webpage

Youtube

